

ATTACHMENT # L-1
Typical 180-ft State Tower Loading Plan

ITEM	MOUNTING LOCATION Measured Down from Top	MOUNTING LOCATION AGL	ANT. MODEL	AZIMUTH	FREQ.	LINE SIZE
1	Top	180	BMR-12 & Mount	0°	800 MHZ	1 5/8"
2	Top	180	BMR-12 & Mount	120°	800 MHZ	1 5/8"
3	Top	180	BMR-12 & Mount	240°	800 MHZ	1 5/8"
4	Top Less 20'	160	BMR-12 & Mount	0°	800 MHZ	1 5/8"
5	Top Less 20'	160	BMR-12 & Mount	120°	800 MHZ	1 5/8"
6	Top Less 20'	160	BMR-12 & Mount	240°	800 MHZ	1 5/8"
7	Top Less 30'	150	8' HP Solid Dish	0°	6 GHZ	EW63
8	Top Less 30'	150	8' HP Solid Dish	120°	6 GHZ	EW63
9	Top Less 30'	150	8' HP Solid Dish	240°	6 GHZ	EW63
10	Top Less 40'	140	DB 420-D & Mount	0°	450 MHZ Dual Fed Antenna	2x7/8"
11	Top Less 40'	140	DB 420-D & Mount	120°	450 MHZ Dual Fed Antenna	2x7/8"
12	Top Less 40'	140	DB 420-D & Mount	240°	450 MHZ Dual Fed Antenna	2x7/8"

ITEM	MOUNTING LOCATION Measured Down from Top	MOUNTING LOCATION AGL	ANT. MODEL	AZIMUTH	FREQ.	LINE SIZE
13	Top Less 60'	120 feet	DB224 & Mount	0°	138-174 MHz	7/8"
14	Top Less 60'	120 feet	DB224 & Mount	120°	138-174 MHz	7/8"
15	Top Less 60'	120 feet	DB224 & Mount	240°	138-174 MHz	7/8"
16	Top Less 80'	100 feet	(6) DAPA 59210 Panel Antenna & Mounts	360°	1710- 1990 MHz	24x1-5/8"
17	Top Less 80'	100 feet	8' HP Solid Dish	0°	6 GHZ	EW63
18	Top Less 80'	100 feet	8' HP Solid Dish	120°	6 GHZ	EW63
19	Top Less 80'	100 feet	8' HP Solid Dish	240°	6 GHZ	EW63
20	Top Less 120'	60 feet	(6) DB858HV90E- SX Panel Antenna Array & Mounts	360°	806-896 MHz	6x 1-5/8"
21	Top Less 140'	40 feet	(6) DAPA 59210 Panel Antenna & Mounts	360°	1710- 1990 MHz	24x1-5/8"

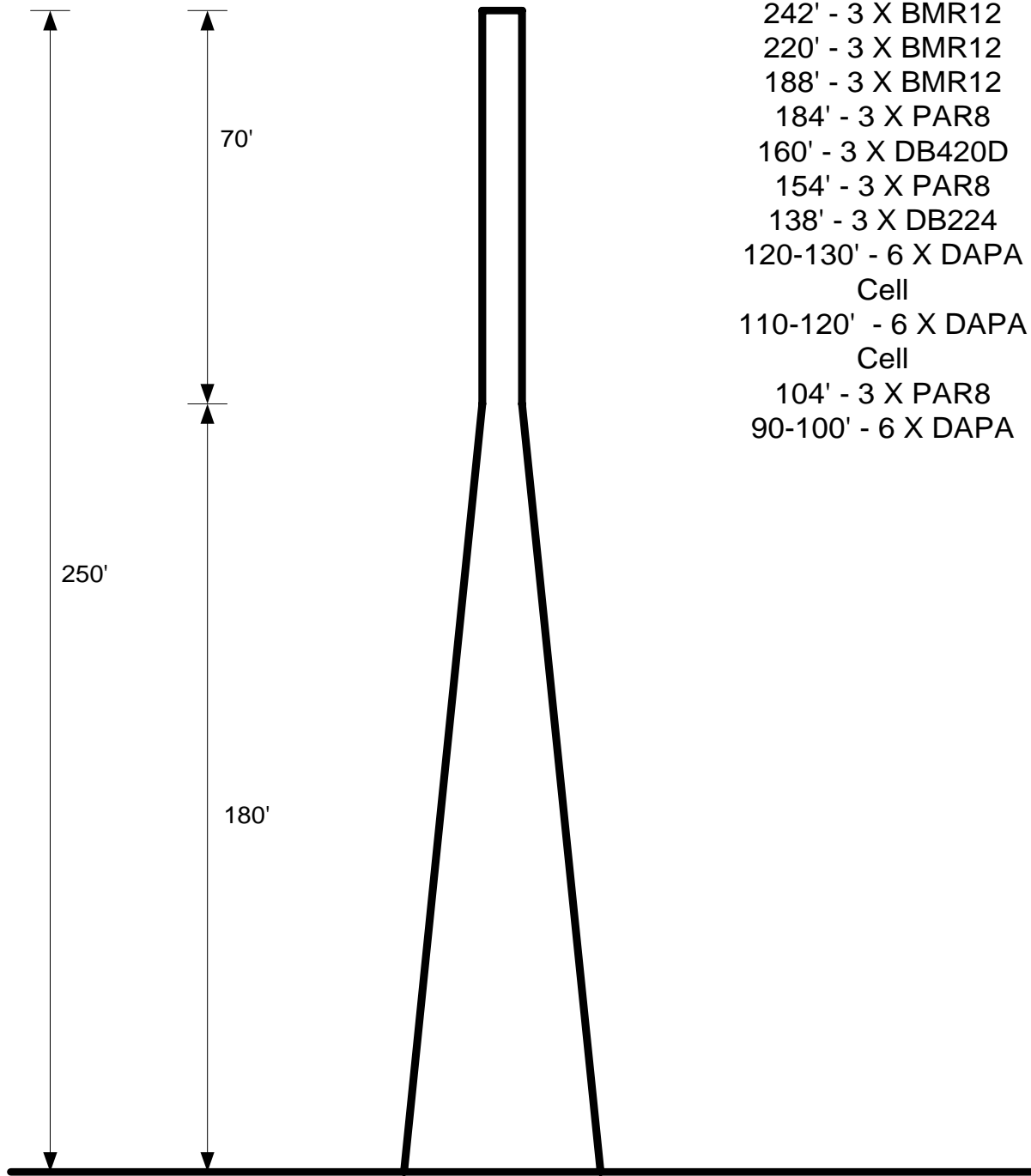
ATTACHMENT # L-2
Typical 250-ft State Tower Loading Plan

ITEM	MOUNTING LOCATION Measured Down from Top	MOUNTING LOCATION AGL	ANT. MODEL	AZIMUTH	FREQ.	LINE SIZE
1	Top less 8'	242	BMR-12	0°	800 MHZ	1 5/8"
2	Top less 8'	242	BMR-12	120°	800 MHZ	1 5/8"
3	Top less 8'	242	BMR-12	240°	800 MHZ	1 5/8"
4	Top Less 30'	220	BMR-12	0°	800 MHZ	1 5/8"
5	Top Less 30'	220	BMR-12	120°	800 MHZ	1 5/8"
6	Top Less 30'	220	BMR-12	240°	800 MHZ	1 5/8"
7	Top Less 62'	188	BMR-12	0°	800 MHZ	1 5/8"
8	Top Less 62'	188	BMR-12	120°	800 MHZ	1 5/8"
9	Top Less 62'	188	BMR-12	240°	800 MHZ	1 5/8"
10	Top Less 66'	184	PAR-8	0°	6 GHz	EW63
11	Top Less 66'	184	PAR-8	120°	6 GHz	EW63
12	Top Less 66'	184	PAR-8	240°	6 GHz	EW63
13	Top Less 90'	160 feet	DB420D	0°	450 MHZ	2 X 7/8"
14	Top Less 90'	160 feet	DB420D	120°	450 MHZ	2 X 7/8"
15	Top Less 90'	160 feet	DB420D	240°	450 MHZ	2 X 7/8"

16	Top Less 96'	154 feet	PAR-8	0°	6 GHz	EW63
17	Top Less 96'	154 feet	PAR-8	120°	6 GHz	EW63
18	Top Less 96'	154 feet	PAR-8	360°	6 GHz	EW63
19	Top Less 112'	138 feet	DB224	0°	138-174 MHz	7/8"
20	Top Less 112'	138 feet	DB224	120°	138-174 MHz	7/8"
21	Top Less 112'	138 feet	DB224	240°	138-174 MHz	7/8"
22	Top Less 125'	125 feet	(6) DAPA Cell Panel Array	360°		6 X 1 5/8"
23	Top Less 135'	115 feet	(6) DAPA Cell Panel Array	360°		6 X 1 5/8"
24	Top Less 146'	104 feet	PAR-8	0°	6 GHz	EW63
25	Top Less 146'	104 Feet	PAR-8	120°	6 GHz	EW63
26	Top Less 146'	104 Feet	PAR-8	240°	6 GHz	EW63
27	Top Less 155'	95 Feet	(6) DAPA Cell Panel Array	360°		6 X 1 5/8"

Antenna Model #	Height	Diameter	Shape
BMR-12-0-B1	20'	6-5/8"	Omni Directional - Stick
DB-224	23.25'	2"	Exposed Dipole - Array
PAR-8	8'	8'	8' Microwave Dish antenna
DAPA-59210	71"	6.3"	PCS Panel antenna
DB420D	23.25'	2"	Dual Exposed Dipole - Array

Oxon Hill Tower Loading Plan



DRAWING NOT TO SCALE

ATTACHMENT L-3
Typical 330' State Tower Loading Plan

<u>Antenna #</u>	<u>Mounting Location</u> (Measured down from top)	<u>Mounting Location</u> (AGL)	<u>Antenna Model</u>	<u>Azimuth</u>	<u>Frequency</u>	<u>Line Size</u>	<u>To be supplied with tower</u>
1	Top	330	BMR-12	0°	800 MHZ	1 5/8"	N
2	Top	330	BMR-12	120°	800 MHZ	1 5/8"	N
3	Top	330	BMR-12	240°	800 MHZ	1 5/8"	N
4	Top Less 20'	310	BMR-12	0°	800 MHZ	1 5/8"	N
5	Top Less 20'	310	BMR-12	120°	800 MHZ	1 5/8"	N
6	Top Less 20'	310	BMR-12	240°	800 MHZ	1 5/8"	N
7	Top Less 40'	290	BMR-12	0°	800 MHZ	1 5/8"	N
8	Top Less 40'	290	BMR-12	120°	800 MHZ	1 5/8"	N
9	Top Less 40'	290	BMR-12	240°	800 MHZ	1 5/8"	N
10	Top Less 60'	270	DB 420-D	0°	450 MHZ Dual fed antenna	(2) Ea. 7/8"	N
11	Top Less 60'	270	DB 420-D	120°	450 MHZ Dual fed antenna	2 X 7/8"	N
12	Top Less 60'	270	DB 420-D	240°	450 MHZ Dual fed antenna	2 X 7/8"	N
13	Top Less 80'	250	DB 224	0°	138-174 MHZ	7/8"	N
14	Top Less 80'	250	DB 224	120°	138-174 MHZ	7/8"	N
15	Top Less 80'	250	DB 224	240°	138-174 MHZ	7/8"	N

<u>Antenna #</u>	<u>Mounting Location</u> (Measured down from top)	<u>Mounting Location</u> (AGL)	<u>Antenna Model</u>	<u>Azimuth</u>	<u>Frequency</u>	<u>Line Size</u>	<u>To be supplied with tower</u>
16	Top Less 100'	230 feet	(6) DAPA 59210 Panel Antenna	360°	1710-1990 MHZ	6 X 1 5/8"	N
17	Top Less 120'	210 feet	(6) DB858HV9 0E-SX Panel Antenna Array	360°	806-896 MHZ	12 X 1 5/8"	N
18	Top Less 140'	190 feet	8' HP Solid Dish	0°	6.000 GHz	EW63	N
19	Top Less 140'	190 feet	8' HP Solid Dish	120°	6.000 GHz	EW63	N
20	Top Less 140'	190 feet	8' HP Solid Dish	240°	6.000 GHz	EW63	N
21	Top Less 160'	170 feet	(6) DAPA 59210 Panel Antenna Array	360°	1710-1990 MHZ	6 X 1 5/8"	N
22	Top Less 180'	150 feet	(6) DB858HV90 E-SX Panel Antenna Array	360°	806-896 MHZ	12 X 1 5/8"	N
23	Top Less 200'	130 feet	8' HP Solid Dish	0°	6.000 GHz	EW63	N
24	Top Less 200'	130 feet	8' HP Solid Dish	120°	6.000 GHz	EW63	N
25	Top Less 200'	130 feet	8' HP Solid Dish	240°	6.000 GHz	EW63	N
26	Top Less 220'	110 feet	(6) DB858HV90 E-SX Panel Antenna Array	360°	806-896 MHZ	12 X 1 5/8"	N
27	Top Less 240'	90 feet	(6) DAPA 59210 Panel Antenna Array	360°	1710-1990 MHZ	6 X 1 5/8"	N

**Attachment L-4
Tower Loading for 450' Self Supporting Tower**

ITEM	MOUNTING LOCATION Measured Down from Top	MOUNTING LOCATION AGL	ANT. MODEL	AZIMUTH	FREQ.	LINE SIZE	SUPPLY W/ TOWER
1	Top	Top	BMR-12	0°	800 MHZ	1 5/8"	N
2	Top	Top	BMR-12	0°	800 MHZ	1 5/8"	N
3	Top	Top	BMR-12	0°	800 MHZ	1 5/8"	N
4	Top Less 20'	430	BMR-12	0°	800 MHZ	1 5/8"	N
5	Top Less 20'	430	BMR-12	0°	800 MHZ	1 5/8"	N
6	Top Less 20'	430	BMR-12	0°	800 MHZ	1 5/8"	N
7	Top Less 50'	400	BMR-12	0°	800 MHZ	1 5/8"	N
8	Top Less 50'	400	BMR-12	0°	800 MHZ	1 5/8"	N
9	Top Less 50'	400	BMR-12	0°	800 MHZ	1 5/8"	N
10	Top Less 70'	380	BMR-12	0°	800 MHZ	1 5/8"	N
11	Top Less 70'	380	BMR-12	120°	800 MHZ	1 5/8"	N
12	Top Less 70'	380	BMR-12	240°	800 MHZ	1 5/8"	N
13	Top Less 90'	360	BMR-12	0°	800 MHZ	1 5/8"	N
14	Top Less 90'	360	BMR-12	120°	800 MHZ	1 5/8"	N
15	Top Less 90'	360	BMR-12	240°	800 MHZ	1 5/8"	N
16	Top Less 110'	340	BMR-12	0°	800 MHZ	1 5/8"	N

ITEM	MOUNTING LOCATION Measured Down from Top	MOUNTING LOCATION AGL	ANT. MODEL	AZIMUTH	FREQ.	LINE SIZE	SUPPLY W/ TOWER
17	Top Less 110'	340	BMR-12	120°	800 MHZ	1 5/8"	N
18	Top Less 110'	340	BMR-12	240°	800 MHZ	1 5/8"	N
19	Top Less 130'	320	DB 420-D	0°	450 MHZ Dual fed antenna	(2) Ea. 7/8"	N
20	Top Less 130'	320	DB 420-D	120°	450 MHZ Dual fed antenna	2 X 7/8"	N
21	Top Less 130'	320	DB 420-D	240°	450 MHZ Dual fed	2 X 7/8"	N
22	Top Less 150'	300	DB 224	0°	138- 174 MHZ	7/8"	N
23	Top Less 150'	300	DB 224	120°	138- 174 MHZ	7/8"	N
24	Top Less 150'	300	DB 224	240°	138- 174 MHZ	7/8"	N
25	Top Less 170'	280 feet	(9) DAPA 59210 Panel Antenna Array	360°	1710- 1990 MHZ	24 X 1 5/8"	N
26	Top Less 190'	260 feet	(9) DB858HV90E- SX Panel Antenna Array	360°	806- 896 MHZ	9 X 1 5/8"	N

ITEM	MOUNTING LOCATION Measured Down from Top	MOUNTING LOCATION AGL	ANT. MODEL	AZIMUTH	FREQ.	LINE SIZE	SUPPLY W/ TOWER
27	Top Less 210'	240 feet	8' HP Solid Dish	0°	6.000 GHz	EW63	N
28	Top Less 210'	240 feet	8' HP Solid Dish	120°	6.000 GHz	EW63	N
29	Top Less 210'	240 feet	8' HP Solid Dish	240°	6.000 GHz	EW63	N
30	Top Less 230'	220 feet	(9) DAPA 59210 Panel Antenna Array	360°	1710- 1990 MHZ	12 X 1 5/8"	N
31	Top Less 250'	200 feet	(9) DB858HV90E- SX Panel Antenna Array	360°	806- 896 MHZ	9 X 1 5/8"	N
32	Top Less 270'	180 feet	8' HP Solid Dish	0°	6.000 GHz	EW63	N
33	Top Less 270'	180 feet	8' HP Solid Dish	120°	6.000 GHz	EW63	N
34	Top Less 270'	180 feet	8' HP Solid Dish	240°	6.000 GHz	EW63	N
35	Top Less 280'	170 feet	(9) DB858HV90E- SX Panel Antenna Array	360°	806- 896 MHZ	9 X 1 5/8"	N
36	Top Less 300'	150 feet	(9) DAPA 59210 Panel Antenna Array	360°	1710- 1990 MHZ	24 X 1 5/8"	N