

Statewide High Speed Network

networkMaryland Advisory
Group Meeting

November 14, 2006

Annapolis, Maryland





MEETING AGENDA



- Welcome & Introductions
- State of the Network
- Status of Project
- Financial Review
- Other Business



Welcome



- Introductions
- Gregory Urban – Director
- Ellis Kitchen – State CIO
- Meeting Minutes Approval



MEETING AGENDA



- Welcome & Introductions
- State of the Network
- Status of Project
- Financial Review
- Other Business

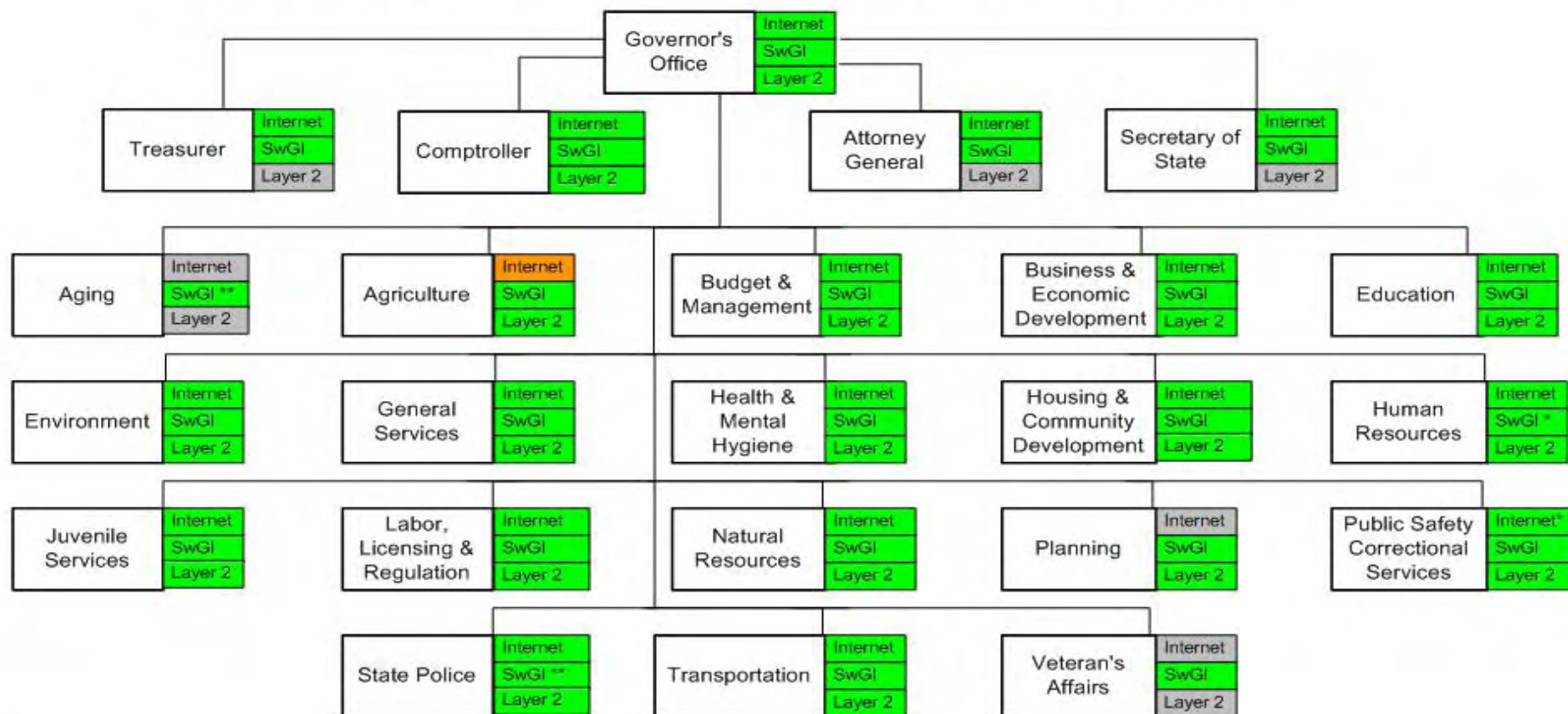


Operational Customers

- 65 Subscribers today
- Circuit Breakdown
 - 72 ISP Circuits
 - 79 SwGI Circuits
 - 1029 Layer 2 Circuits
 - 12 VPN Connections

Executive Branch

networkMaryland Subscribers as of November 13, 2006



Legend:

Agency is Not Receiving networkMaryland Service - A Cost Savings exists if networkMaryland provides service
Agency Expressed Interest in Receiving networkMaryland Service
Agency is in Process of Receiving networkMaryland Service (JCR submitted)
Agency is Receiving networkMaryland Service
Size of Agency is small and does not realize a significant cost savings by connecting to networkMaryland or the service is not required

* - Denotes a change from the last Advisory Group Meeting Presentation

* networkMaryland Provisioning has been completed, Department is in process of migrating to service

** Agency is receiving networkMaryland service through parent, primary agency

Non-Executive Branch

networkMaryland Subscribers as of November 13, 2006

Charles County Government	Internet SwGI Layer 2	Office of People's Council	Internet SwGI Layer 2	State Lottery	Internet SwGI Layer 2	University System of Maryland	Internet SwGI Layer 2	Frederick County Government	Internet SwGI Layer 2
State Board of Elections	Internet SwGI * Layer 2	Maryland State Archives	Internet * SwGI Layer 2	Department of Assessment and Taxation	Internet SwGI Layer 2	MIEMMS	Internet SwGI Layer 2	Montgomery County Government	Internet SwGI Layer 2
Commission of Human Relations	Internet SwGI Layer 2	Office for Children	Internet SwGI Layer 2	Office of Public Defender	Internet SwGI Layer 2	Office of Legislative Auditors	Internet SwGI Layer 2	Prince Georges County Government	Internet SwGI Layer 2
Workers' Compensation Commission	Internet SwGI * Layer 2	State Retirement Agency	Internet SwGI Layer 2	Judiciary	Internet SwGI Layer 2	Alleghany County Board of Education	Internet SwGI Layer 2	Dept. of Rehabilitative Services	Internet ** SwGI** Layer 2
MD Higher Education Commission	Internet SwGI Layer 2	College Savings Plans of Maryland	Internet SwGI Layer 2	Maryland State Retirement Plan	Internet SwGI Layer 2	Maryland Emergency Management Agency	Internet * SwGI Layer 2	State Board of Contract Appeals	Internet SwGI Layer 2 *
Public Service Commission	Internet SwGI Layer 2	Baltimore City	Internet SwGI Layer 2	MD Insurance Administration	Internet SwGI * Layer 2	MD General Assembly	Internet SwGI Layer 2	Baltimore City Community College	Internet SwGI Layer 2 *
		CAPWIN	Internet SwGI Layer 2	Anne Arundel County Government	Internet SwGI * Layer 2	Howard County Government	Internet SwGI Layer 2		
		Carroll County Gov't	Internet SwGI Layer 2	Office of Admin Hearings	Internet SwGI Layer 2	MD Auto Insurance Fund	Internet SwGI Layer 2		
				MD Stadium Authority	Internet SwGI Layer 2 *	MD Public TV (MPT)	Internet SwGI Layer 2		

Legend:

- Agency Expressed Interest in Receiving networkMaryland Service
- Agency is in Process of Receiving networkMaryland Service (JCR submitted)
- Agency is Receiving networkMaryland Service
- Size of Agency is small and does not realize a significant cost savings by connecting to networkMaryland or the service is not required

* - Denotes a change from the last Advisory Group Meeting Presentation
 * networkMaryland Provisioning has been completed, Department is in process of migrating to service
 ** Agency is receiving networkMaryland service through parent, primary agency



Operations

Milestones\New Business

- Legacy FMIS migration continues
 - Only 2 remaining customers
 - Remaining Agencies waiting for equipment\circuit to arrive
- New SMTP Mail appliance installed at 6 St. Paul
 - Currently In testing stages
- Baltimore ISP bandwidth upgrade
 - Turning up new connection by the end of this month
- Working with Bearing Point, Inc. on Disaster Recovery Planning (facilities level)
 - Anticipate DRP document to be ready by Dec. 29, 2006
- DNS for SwGI
 - Identified hardware for providing the service
- SAILOR connection from Baltimore to JFK PoP enabled
 - 150 Mbps connection active today



Upcoming Tasks



- Customers on the Horizon
 - Carroll County Gov't – ISP & SwGI (pending MOU)
 - SAILOR Ethernet hand-off @ Elkton (pending PoP completion)
 - St. Mary's County – ISP & SwGI (pending MOU)
 - Garrett County – ISP (pending MOU)
 - Caroline County
 - Splice enclosures installed in Denton
 - Ready for Discussion of a D-MAN
 - VoIP trial with MSP (Northeast to Easton)
 - Router is in place and ready to deliver services
 - Coordinating interface details with MSP



Circuit Provisioning and Acceptance

- 206 circuits are currently in the customer's testing/implementation phase
- 54 new circuits have been provisioned since the last meeting
- 20 circuits have been accepted by the customer since the last meeting



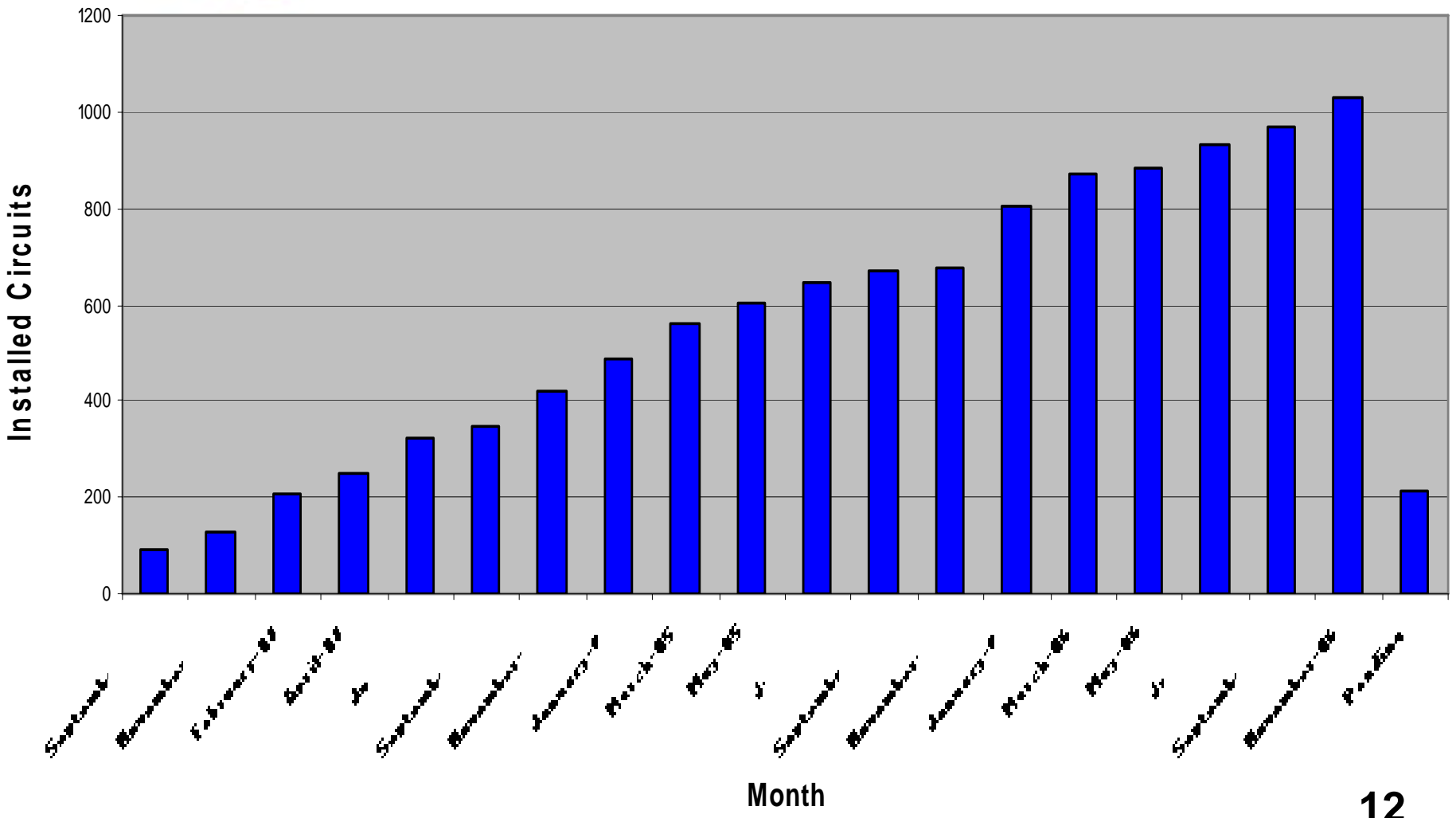
Network Operational Status



- Growth Chart



networkMaryland Installed Circuit Chart





MEETING AGENDA



- Welcome & Introductions
- State of the Network
- **Status of Project**
- Financial Review
- Other Business



Project Status



- Garrett County MSC PoP completed
 - Accepted and signed off in October
 - Currently provisioning ISP & SwGI services for Garrett County
- Leonardtown MSC completed:
 - Accepted and signed off in November
 - Currently provisioning L2 services



Project Status



- JIS Data Center - completed
 - Accepted and signed off in November
 - POP is connected redundantly to the AMAN core
 - AA County is receiving their nwMD services from this PoP
- Stabilizing the Core / Annapolis spur - completed
 - AMAN Core now connects to Parole via two diverse fiber routes
 - Rowe Blvd
 - West St



Project Status



- DWDM Ring (Partnership with USM, MDOT)
 - All fiber construction and splicing has been completed
 - Equipment installation completed
 - Equipment configuration completed
 - System is being tested
 - Expected cut-over January 2007
- Elkton SONET PoP
 - Partnership with Sailor
 - Located at Elkton Library
 - Shelter delivered to site, requires assembly



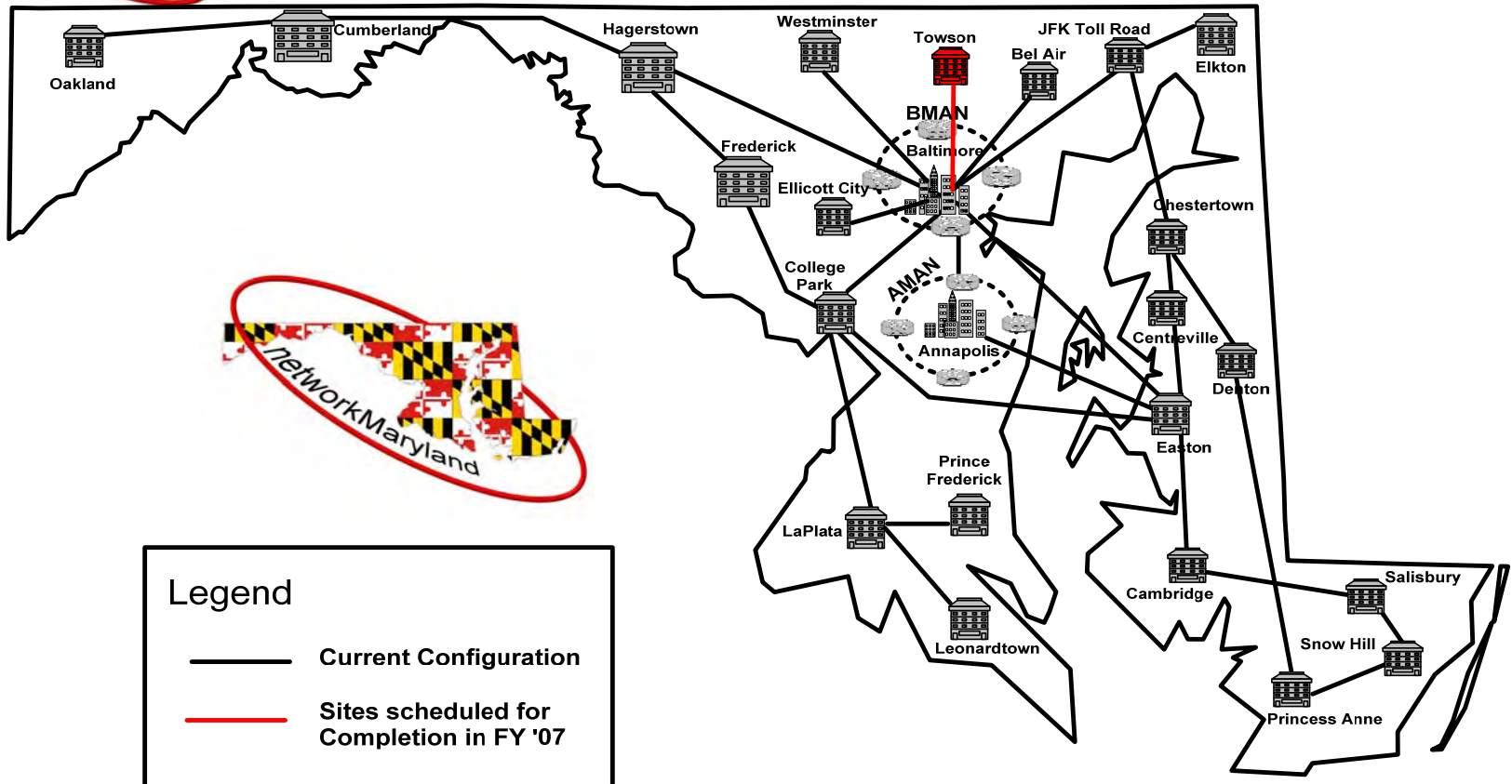
Project Status



- Future POP & Fiber Builds
 - Elkton: Fiber build from SONET node to MSC
 - Towson POP: Baltimore County will build fiber route to County Data Center, networkMaryland will install POP
 - Frederick MAN: Add an additional PoP in Frederick and build a diverse fiber path to the city. Partnership with Frederick County Government
 - Denton MAN: Utilize Caroline County fiber from PoP to building in city housing State Agencies



networkMaryland Overview (November 2006)



Legend

- Current Configuration
- Sites scheduled for Completion in FY '07





MEETING AGENDA



- Welcome & Introductions
- State of the Network
- Status of Project
- **Financial Review**
- Other Business



FY 2006 Performance



- Financial
 - 2006 Operating Budget: \$3,253,346
 - 2006 Cost of Operations: \$3,041,644
 - Performance against budget: 93.5%

- Operational
 - Agency Customers: 45
 - Non-Agency Customer: 6
 - L2 Circuits: 920
 - Internet: 70
 - SwGI: 76



MEETING AGENDA



- Welcome & Introductions
- State of the Network
- Status of Project
- Financial Review
- Other Business



Other Business



- nwMD Engineering Committee meeting
 - December 11th, 2006, 1:30 PM @ UMBC Technology Center
 - Merged with UMATS engineering meeting
 - Hosted by Richard Rose
- Items for discussion from the Group
- Closing Questions or Comments



Thank You



- Meeting Adjourned